

THE LORRAINE

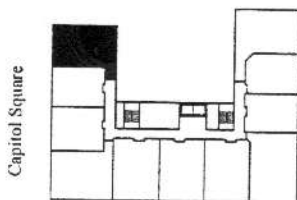
Condominium Homes

"The Siesel" 1,314 Square Feet

The S.M. Siesel Company of Milwaukee was hired as the general contractor for Hotel Loraine. Construction commenced in 1923 and was completed approximately one year later...



G



West Washington Ave.

UNIT 411, 511, 611, 711
Bedrooms - 2
Bathrooms - 2
Screen Porch - 411
Deck 511